

XTRONS



USER MANUAL

Thank you for buying this XTRONS product. Please read through these instructions thoroughly to understand how to operate this product properly. After you have finished reading the instructions, please keep this document in a safe place for future reference.

NOTICE OF INTENDED USE

Our products are designed to enable viewing of video ONLY for rear-seat occupants, and are not intended for viewing by the driver when the vehicle is in motion. Such use might distract the driver or interfere with the driver's safe operation of the vehicle, and thus result in serious injury or death. Such use might also violate state or local laws.

Manufacturer disclaims any liability for any bodily injury or property damage that might result from any improper or unintended use.

NOTE: Features and specifications listed in this manual are subject to change without notice.

Contents

Precaution	2
Important Safety Information	3
Android Car Headrest Monitor	3
Hearing Safety	4
Getting Started	5
Installing Android Car Headrest Monitor	5
In-Car Use	7
Maintenance of the Player	7
Playback	8
Playing from USB Device	8
Listening FM Over the Vehicle's Speakers	8
Using Bluetooth	10
Using HDMI Source	10
Using Wireless Display	11
Multi-color Backlight	12
Mutual Control	13
Settings	15
System Info	15
Android Settings	15
Volume	17
Brightness	17
Wallpaper	17
Factory Settings	17
Led Settings	17
Troubleshooting	18

Precaution

Certain country and government laws may prohibit or restrict the placement and use of this product in your vehicle. Please comply with all applicable laws and regulations regarding the use, installation and operation of this product.



If you want to dispose of this product, do not mix it with general household waste. To protect the environment and human health, please follow local laws and regulations on the disposal of electronic components or batteries.

Before installing this product

- Use this unit with a 12-volt battery and negative grounding only. Failure to do so may result in a fire or malfunction.
- To avoid shorts in the electrical system, be sure to disconnect the (-) battery cable before installation.
- Do not install this product in a vehicle that does not have an ACC wire or circuitry available.

Important Safety Information

Please read through these instructions so you will know how to operate this product properly. After you have finished reading the instructions, keep this document in a safe place for future reference.

Android Car Headrest Monitor

1. Do not attempt to install or service this product by yourself. Installation or servicing of this product by persons without training and experience in electronic equipment and automotive accessories may be dangerous and could expose you to the risk of electric shock, injury or other hazards.
2. Do not allow this product to come into contact with liquids. Electrical shock could result. Also, damage to the product, smoke and overheating could result from contact with liquids.
3. If liquid or foreign matter should get inside this product, park your vehicle in a safe place, turn the ignition switch off (ACC OFF) immediately and consult your dealer. Do not use this product in this condition because doing so may result in a fire, electric shock, or other failure.
4. If you notice smoke, a strange noise or odour from this product, or any other abnormal sign on the screen, turn off the power immediately and consult your dealer. Using this product in this condition may result in permanent damage to the system.
5. Do not disassemble or modify this product, as there are high-voltage components inside which may cause an electric shock. Be sure to consult your dealer for internal inspection, adjustments or repairs.
6. For children under 12 years old, please use the player under adult supervision.

Important Safety Information

Hearing Safety

Listen at Medium Volume:

Please adjust the volume to an appropriate level. If the volume is too high, it may harm your hearing or even cause permanent damage.

Setting A Safe Volume Level:

1. Set the volume to a low level.
2. Increasing the volume slowly, until a comfortable, clear sound can be heard.

Listen to the Radio within A Reasonable Time Frame:

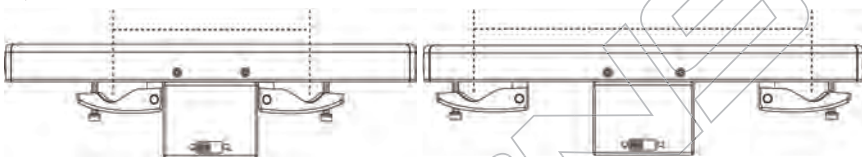
Listening for long periods, even at a reasonable volume, may cause damage to your hearing. Please use the product properly and get a rest when necessary.

Getting Started

Installing Android Car Headrest Monitor

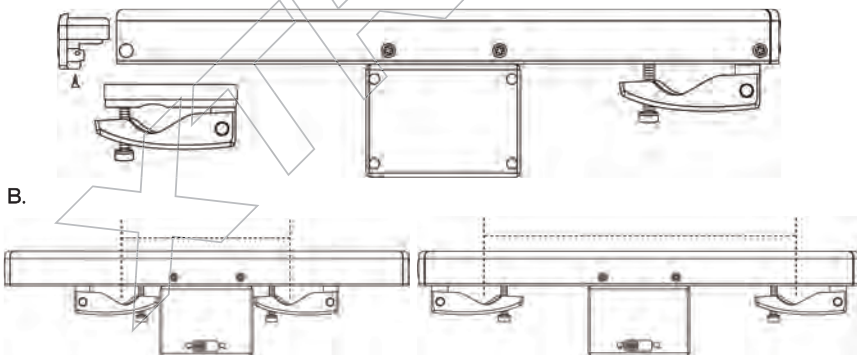
Our mounting bracket has adjustable clips, allowing you to mount it on practically any headrest, as long as the poles are within the adjustable distance. The minimum width is 120mm. The maximum width is 190mm.

A.



The clips on the supplied mounting bracket are detachable by removing the screw attachment on the side of bracket and the cover at the end of the bracket. It allows you to adjust the direction of the clips on the bracket according to the actual situation.

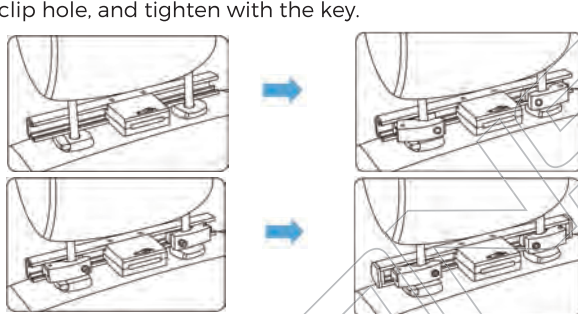
As shown below:



Getting Started

Step 1: Mounting the bracket

To mount the bracket, take left and right bracket screws out, adjust the width of the clips, and mount it on the headrest poles, insert the screws back inside the clip hole, and tighten with the key.

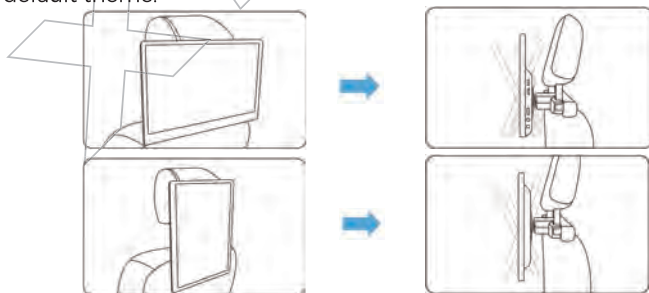


Step 2: Installing the screen

Now you can install your monitor on the mounting bracket. There is a bracket back on the screen, insert into the bracket switch on the headrest poles then lock it.

Headrest features an flexible 90 degree (turn right) stand great for any environment. We can put the display in portrait orientation if so desired. Also, you can adjust the headrest distance and viewing angles.

Note: This feature only work for some XTRONS headrest models, please be subject to the actual. And the portrait orientation display only available on the default theme.



The monitor can also be easily removed thanks to Quick Release Mechanism. Make sure to push the switch to the "unlock" position before pulling the monitor out. Otherwise you may cause damage to the locking mechanism.

Getting started

In-Car Use

Notice: Due to the possible high temperatures inside a closed car, please remove the machine and store in a cool ventilated place if it's not used for a long time.

1. First, turn off the vehicle ignition and connect the supplied car charger to the vehicle's power outlet socket.
2. Connect the other end of the charger cable to the DC power input on the side of the player.
3. Then turn the vehicle ignition switch to ON or ACC and turn on the player power switch.

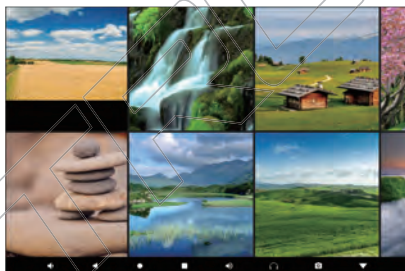
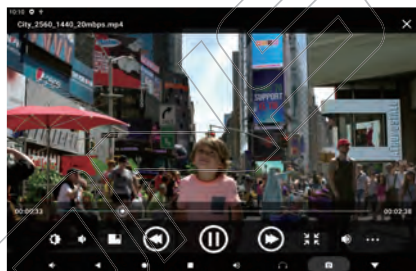
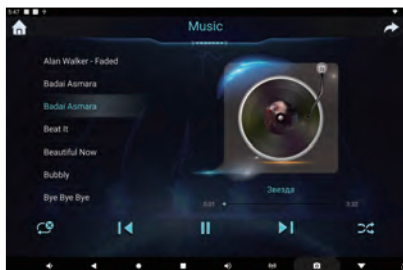
Maintenance of the Player

1. The player's working temperature: 5-40°C.
2. Please do not unplug the power cable when it's in use.
3. It's normal that the player generates heat when playing video but please do not overuse the player or this may become an issue.
4. Please unplug the power cable during electrical or thunderstorms or when the player is not being used for a long period of time.
5. Please do not use or store the player in a very hot, very humid or very cold environment.
6. Please place the player in a cool, dry and well ventilated place when it is not in use; please do not cover the player with cloth or other object that could impair the efficiency of cooling.
7. Please make sure the player is powered off before cleaning.
8. Do not use any chemicals or cleaning agents to clean the machine, gently wipe the outside of the machine with a clean cloth.

Playback

Playing from USB Device

Insert an external USB device into the corresponding slot on the player (Type-C to USB adapter is needed), the player will automatically identify it. Tap "Music" on the menu to play music, tap "Video" to play video files, or go into "Apps" and tap "Gallery" to view images and photos.



Note:

1. The max capacity of the USB drive shall not be over 128GB/64GB.
2. USB drive maximum supports 1080P video decoding and playback.
3. Before removing the USB storage device stop playback first.


Listening to FM Over the Vehicle's Speakers

The product uses a wireless FM transmitter to send audio through the vehicle's speakers.

Playback



To listen to FM over your speakers:

1. Make sure mute is off. Tap the  icon on the system bar below, turn the FM on, and then select a FM frequency as described below.
2. Turn on the car radio. Tune to the FM frequency displayed on the screen, such as FM 88.1.
3. If no audio is heard, try changing the FM transmitter frequency and returning the radio to a new frequency.

The product saves the frequency you select, and returns back each time the product is turned on.

Note: You might still experience interference if a powerful station is using a frequency that's nearby, or you are hearing a radio station mixed in with the system audio. To avoid this type of interference, try to find an empty space on the dial that has neighboring stations that are at least 0.2 MHz above and below. Do not use local radio station frequencies.

The external FM modulator frequencies are from 76.0 to 108.0.

Using Bluetooth

Connect your bluetooth headset or bluetooth speaker to this unit via Bluetooth to listen to Music.

Connection (Bluetooth pairing)

- A. The Bluetooth device must be within 1 metre of this unit.
- B. Turn on Bluetooth on your device and on the Xtrons device.
- C. From Xtrons device: Go to "Setting" > "Android Settings" > "Enter Android" > "Connected Devices" > "Pair New Device", you can find your Bluetooth device list on the monitor. Touch to pair.
If your Bluetooth device supports SSP (Secure Simple Pairing), a four-digit numerical password will be required. The default password is 0000.

Using HDMI Source

Plug the HDMI cable into the Android Headrest Monitor's "HD IN" or "HD OUT" port, and plug the other end into the corresponding "HDMI" port of a HDMI-enabled machine. Enter "Apps", tap "HDMI-IN".

Please make sure that the connectors at both ends are fully inserted and tightened.

Using Wireless Display

Tap "Apps" > "WifiDisplay" or "Happy Cast" on the menu screen to enter wireless display mode. Find the Miracast or Screen Mirroring on your phone, tap to open the Miracast or Screen Mirroring, the phone will automatically search for available devices, then select the SSID devices on the screen to connect. After you connect a mobile phone with compatible applications installed, you can control the applications for the mobile phone directly from this unit.

Playback

For Android device

For Android smartphones, to use the "WiFi Display", you will need to turn on the WiFi of both Monitor and Android smartphone first, and they need to connect to the same wifi source.

Tap ""settings""-Android Settings"-Enter Android""-Network & internet""-Wi-Fi", turn on the wifi and then connect the hotspot device. (password needed if it requires)



For iOS device

For iOS device, to use the "Happycast", there are two ways of connecting.

1. Turn on the WiFi of both Monitor and iPhone first, and they need to connect to the same wifi source.

Playback


2. Turn on the WiFi of Monitor and the iPhone's hotspot.

Tap ""settings""-""Android Settings""-Enter Android""-""Network & internet""-""Wi-Fi", turn on the wifi of the monitor and then connect the iPhone's hotspot. (password needed if it requires) Go back to the homepage, tap ""Apps", enter the app ""Happy Cast".



Multi-color Backlight

The multi-color backlight spectrums, including the latest Marquee feature, offer you the ability to create an environment that truly shines.

Tap the  icon on the system bar below to customize the lighting to suit your preferences and create a visually appealing atmosphere.

Playback



Mutual Control

To use this function, please follow the steps below:

1. Tap "Apps" > "AutoCastServer" on the monitor's menu screen.
2. Use your phone to scan the QR Code or search for "AutoCast" in the App store and install it.

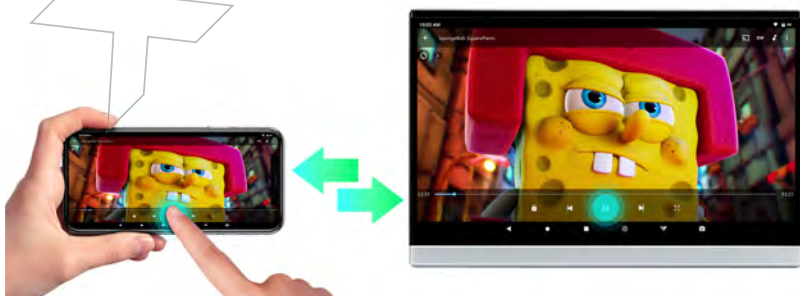


Playback

3. Turn on the "Personal Hotspot" on your phone.
4. On the monitor, tap "Settings" > "Android Settings" > "Enter Android" > "Network & Internet". Turn on Wi-Fi to search for the phone's hotspot. Connect the monitor to the phone's hotspot network.
5. Once successfully connected to the phone's hotspot, open the "AutoCast" app on your phone. In the device list, tap the correct device name to automatically connect. Then click on "Casting Control".



You can control the android monitor with "AutoCast" now!



Settings

1. System Info

About the device

2. Android Settings

2.1 Network & internet

Wi-Fi, mobile, and data usage

Choose a network: Tap one of the listed networks and then enter the password if required.

2.2 Connected device

Bluetooth, Android Auto

Pair new device: Bluetooth will turn on to pair. You can see and change the device name. Tap a device on the Available devices list to pair or unpair it.

See all: Previously connected devices.

2.3 Apps & notifications

Recent apps, default apps Conversations, Notifications, Screen time, Advanced

2.4 Display

2.4.1 Brightness level

Touch "Brightness level" and then drag the slider to adjust the brightness level.

2.4.2 Dark theme

Turn on/off the dark theme.

2.4.3 Adaptive brightness

Turn on the "Adaptive brightness", screen brightness adjusts to environment.

Settings

2.4.4 Screen timeout

Screen Timeout offers settings from 15 seconds to 1 hour. This setting determines how long the screen will stay on after the last activation.

Note: to conserve battery, keep brightness at 3/4 or keep screen timeout at 1 or 2 minutes.

2.4.5 Auto-rotate screen

The auto-rotate feature allows the orientation of the screen to rotate when the screen is flipped into tablet mode.

2.4.6 Advanced

2.5 Sound

Drag the slider to adjust the volume for Media, Call, Alarm and Notification. You can set up Do Not Disturb mode, Shortcut to Prevent Ringing, Default Notification Sound, Default Alarm Sound and more.

2.6 Screenshot

Turn on the screenshot button  in the statusbar.

2.7 Digital Wellbeing & parental controls

Screen time, app timers, bedtime schedules

2.8 Google

Service & preferences

2.9 System

Languages, gestures, time, backup

2.10 About device

3. Volume

Drag the slider to adjust the Media volume.

4. Brightness

Drag the slider to adjust the Backlight level.

5. Wallpaper

Select an image or photo as wallpaper for the home screen.

6. Factory Settings

Enter the password 123 to go to Factory settings.

Logo Settings:

Select a pre-installed logo as the default one.

Theme Settings:

Select one of the pre-installed themes as the default one.

7. LED Settings

Choose a color for the LED panel lights.

You can choose one of the single colours or choose auto flash different colors.

Troubleshooting

Trouble	Remedy
No sound and image	Power disconnected or the device is off.
Black screen	Undervoltage.
Abnormal start	<ol style="list-style-type: none">1. Press the power key and then press and hold it for 3 seconds to shut it down.2. Press the reset key to restart the system.
WiFi not connected	Refresh the network or close and re-open WiFi.
Colour shift	Wrong function menu setup or incorrect model.
No power	<ol style="list-style-type: none">1. Incorrect voltage: inspect the connection cables.2. Disconnection of fuse: replace the fuse specification.
Failure to read HD/USB/ TF/audio/video files	<ol style="list-style-type: none">1. Re-insert the HD/USB into the port at the side of the device.2. Select options in audio and video player.

For more information, please visit our websites



www.xtrons.com

For installation and technical advice, please visit



bbs.xtrons.com



Facebook

<https://www.facebook.com/xtrons>



Twitter

https://twitter.com/xtrons_ug



YouTube

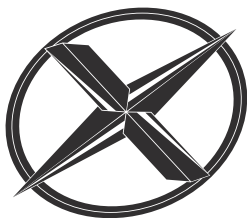
<https://www.youtube.com/user/ourxtrons/>



RSS

<https://xtrons.com/rss/>

© XTRONS CORPORATION. All rights reserved.



www.xtrons.com

